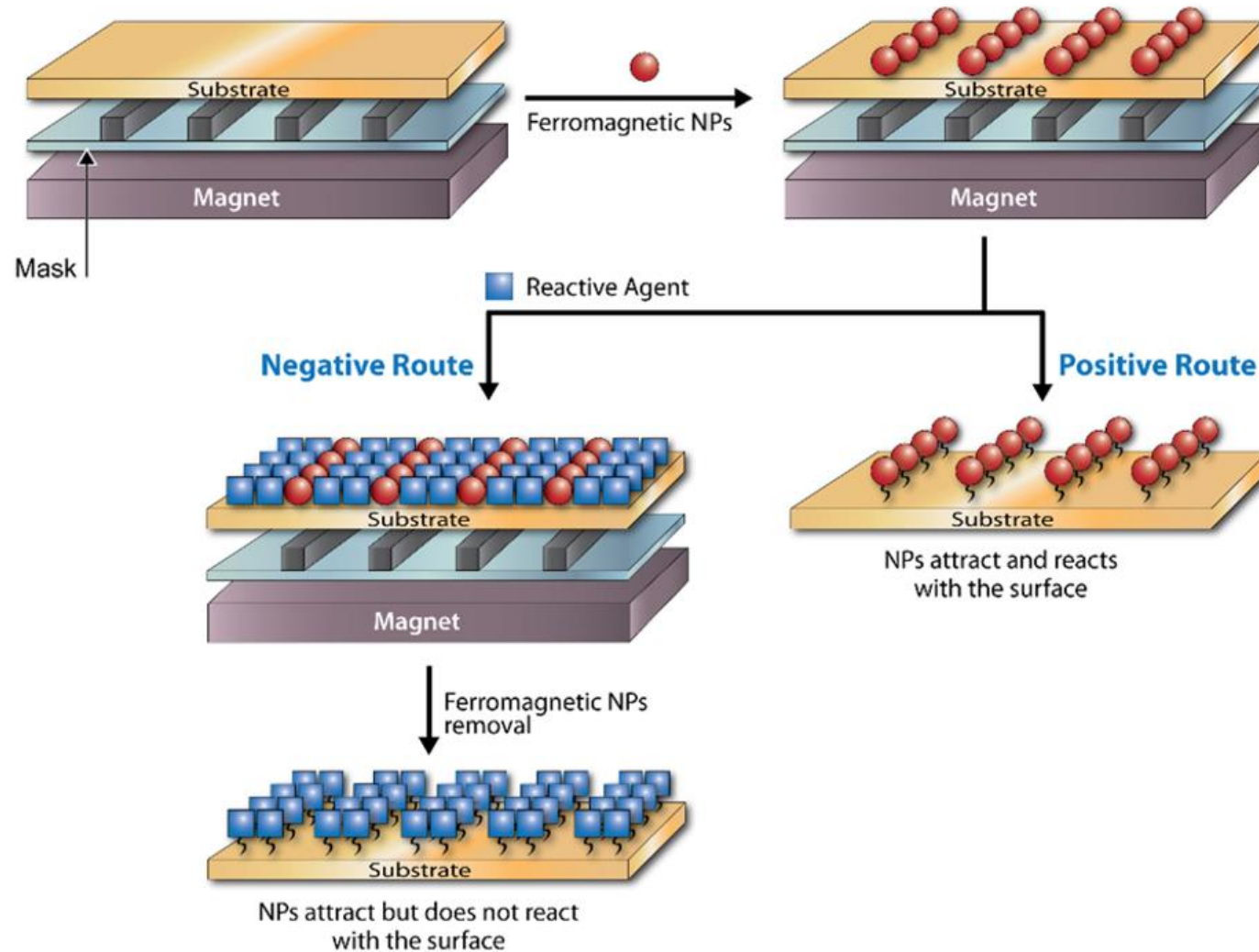
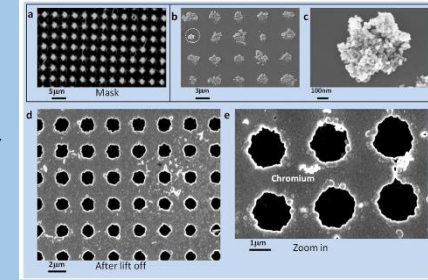
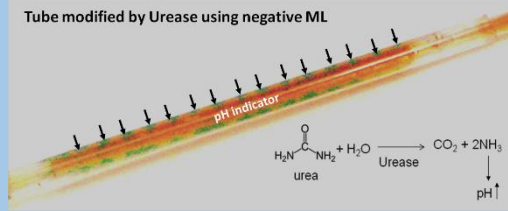
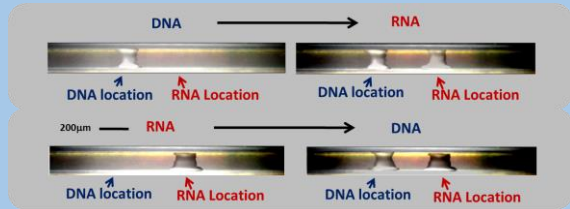


Magneto-Lithography (ML) Method

Scheme of two approaches using positive and negative ML



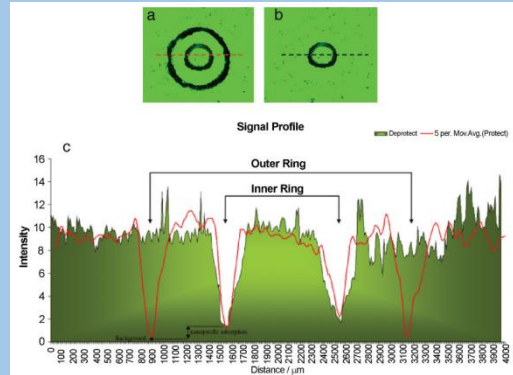
Magnetolithography (ML) Applications



Ultra sensitive detection
of molecules and
Supermolecules

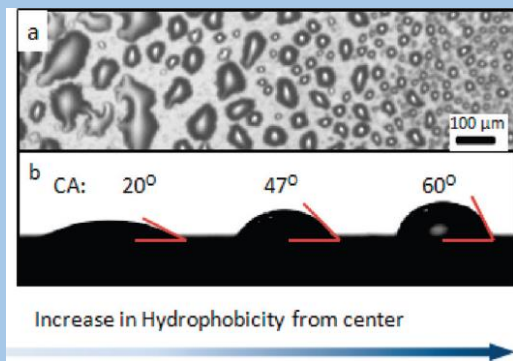
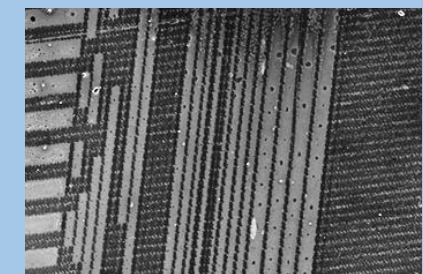
Non flat surfaces
patterning
Micro reactors

Positive and negative ML
Metal Deposition



Molecular and Multi
stage patterning

Patterning using hard disc
as a mask



Patterning gradient
properties

Dynamic mask

